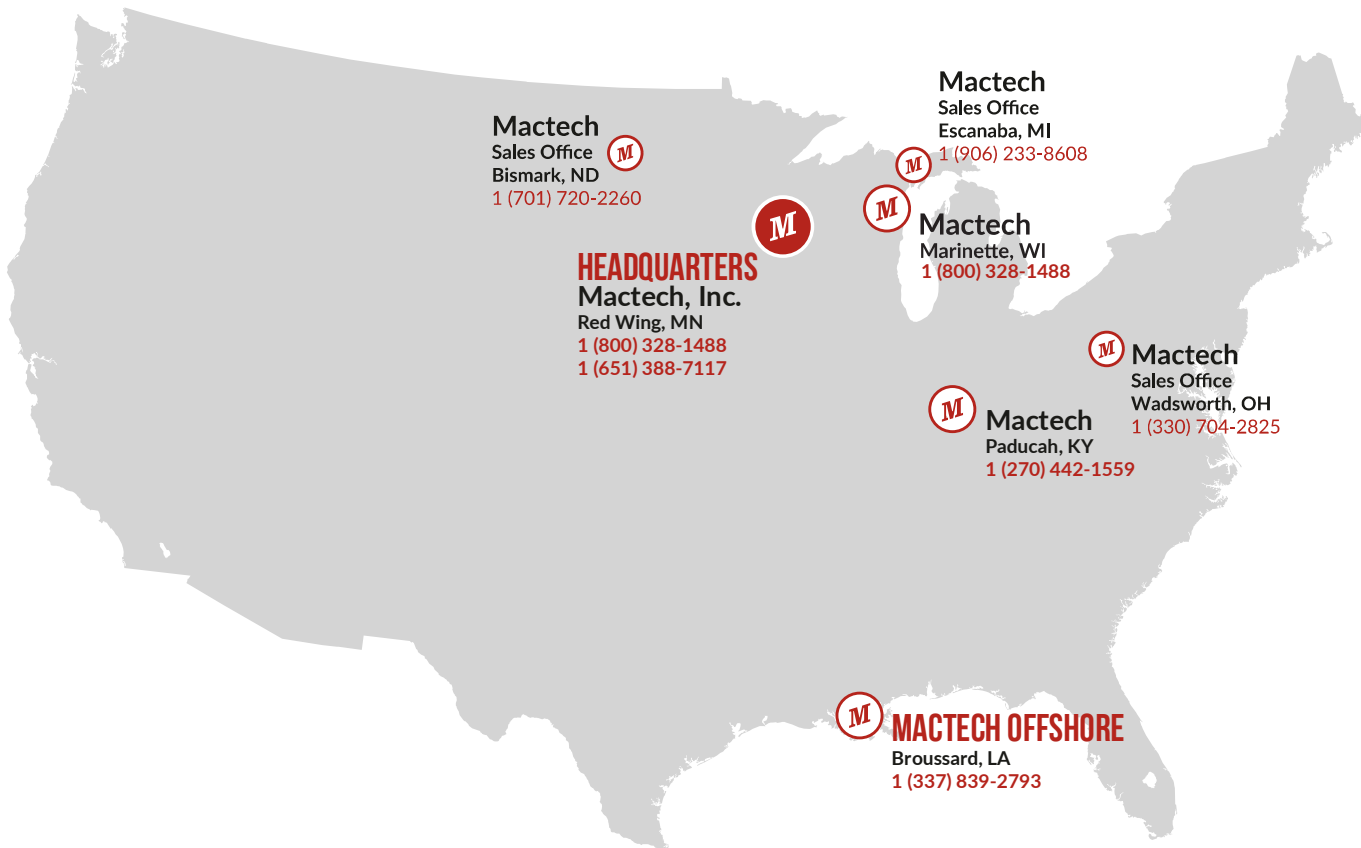


MACTECH
OFFSHORE CUTTING SOLUTIONS

OFFSHORE PRODUCTS AND SERVICES OVERVIEW

MACTECHOFFSHORE.COM



WORLDWIDE SUPPLIERS AND SERVICE

*Mactech proudly has representation
across the globe.*

*For more information on connecting with
your nearest sales agent, contact us at:*

info@mactechoffshore.com

1 (337) 839-2793



Unique Group

Jerrell



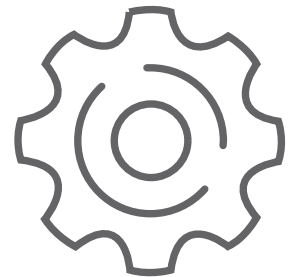
FOUNDED IN 1974

**STRATEGICALLY LOCATED THROUGHOUT THE U.S.
WITH FIVE INTERNATIONAL DISTRIBUTION PARTNERS**

- ▶ 40 Full-time technicians
- ▶ 6 Full-time engineering staff
- ▶ 500+ On-site machine tools
- ▶ 50+ Rental Diamond Wire Saws
- ▶ In-house production of equipment and tooling
- ▶ Around the clock manufacturing capability
- ▶ Sales, Rental, and Service



40+ TECHNICIANS



500+ MACHINE TOOLS

MACTECH OFFSHORE PROVEN PROCESS

WITH OVER 45 YEARS OF EXPERIENCE IN THE FIELD MACHINING SERVICE INDUSTRY, WE CREATED THESE SIX STEPS TO ENSURE A SUCCESSFUL EXECUTION FROM START TO FINISH

1. Define the scope of the project clearly
2. Create a best-value plan for the projects completion
3. Communicate and confirm the recommendation
4. Schedule and coordinate all required resources
5. Execute the plan and be ready to adapt with open communication through completion
6. Continuous improvement review

WHAT MAKES MACTECH OFFSHORE UNIQUE?



EXCEPTIONAL PEOPLE AND EQUIPMENT



PASSIONATE CUSTOMER COMMITMENT



EXPERTISE FROM EXPERIENCE

SUBSEA CUTTING SOLUTIONS

**WE PROVIDE VALUE BY SOLVING PROBLEMS
THROUGH EXPERIENCE**

- ▶ Offshore and Onshore Oil & Gas
- ▶ Marine Construction
- ▶ Civil & Heavy Construction
- ▶ Cutting, drilling, and machining solutions



PORTABLE LATHES & PIPE CUTTING

Lathes designed for minimal clearance requirements and easy installation

- ▶ Clamshell, shaft, & end-prep lathes
- ▶ OD, ID, and End Mounting
- ▶ Cut and bevel up to 110" OD
- ▶ Versatile attachments



CLAMSHELL LATHE ATTACHMENTS

Attachments designed to add versatility and value to Clamshell Lathes.

- ▶ Counterboring
- ▶ Flange Facing
- ▶ Shaft Turning
- ▶ Milling for weld removal & cutting
- ▶ Pipe cutting under compression
- ▶ Indexed hole drilling



17" - 33" ID MILLING MACHINE

Reliably cuts casings, pilings, and other pipes / tubes from the inside diameter

- ▶ Sever capabilities from 17" - 33" ID
- ▶ No external dredging or digging
- ▶ Easily cuts below the mudline
- ▶ Self-centering mechanism



33" - 60" ID MILLING MACHINE

Reliably cuts casings, pilings, and other pipes / tubes from the inside diameter

- ▶ Sever capabilities from 33" - 60" ID
- ▶ No external dredging or digging
- ▶ Easily cuts below the mudline
- ▶ Self-centering mechanism
- ▶ Dual spindles reduce cut time by 50%



DIAMOND WIRE SAWS OVERVIEW

For surface and underwater cutting of almost any material

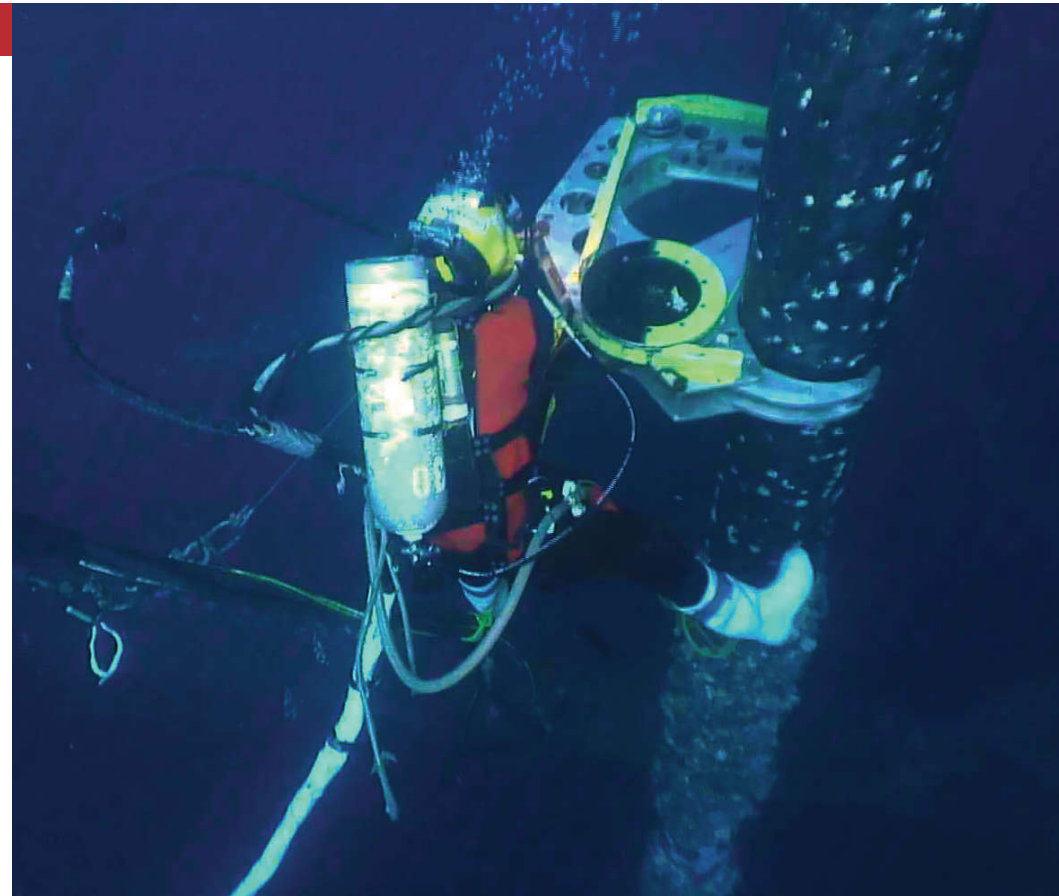
- ▶ Cutoff / Inline / Articulating
- ▶ Cutting range of 3.5" to 120"
- ▶ ROV compatible configurations on some models
- ▶ Optional automatic feed available on some models



CUTOFF DIAMOND WIRE SAWS

Compact, lightweight design for tight spaces

- ▶ Cutting range 3.5" to 24"
- ▶ 2 Models available
- ▶ ROV Compatible options
- ▶ Automatic feed available



INLINE DIAMOND WIRE SAWS

Our largest cutting range and most versatile design to suit most applications

- ▶ Cutting range of 14" to 120"
- ▶ 8 models available
- ▶ ROV compatible options
- ▶ Standard automatic feed



ARTICULATING DIAMOND WIRE SAWS

Specialty saws for cutting in excavations and space with low axial clearance

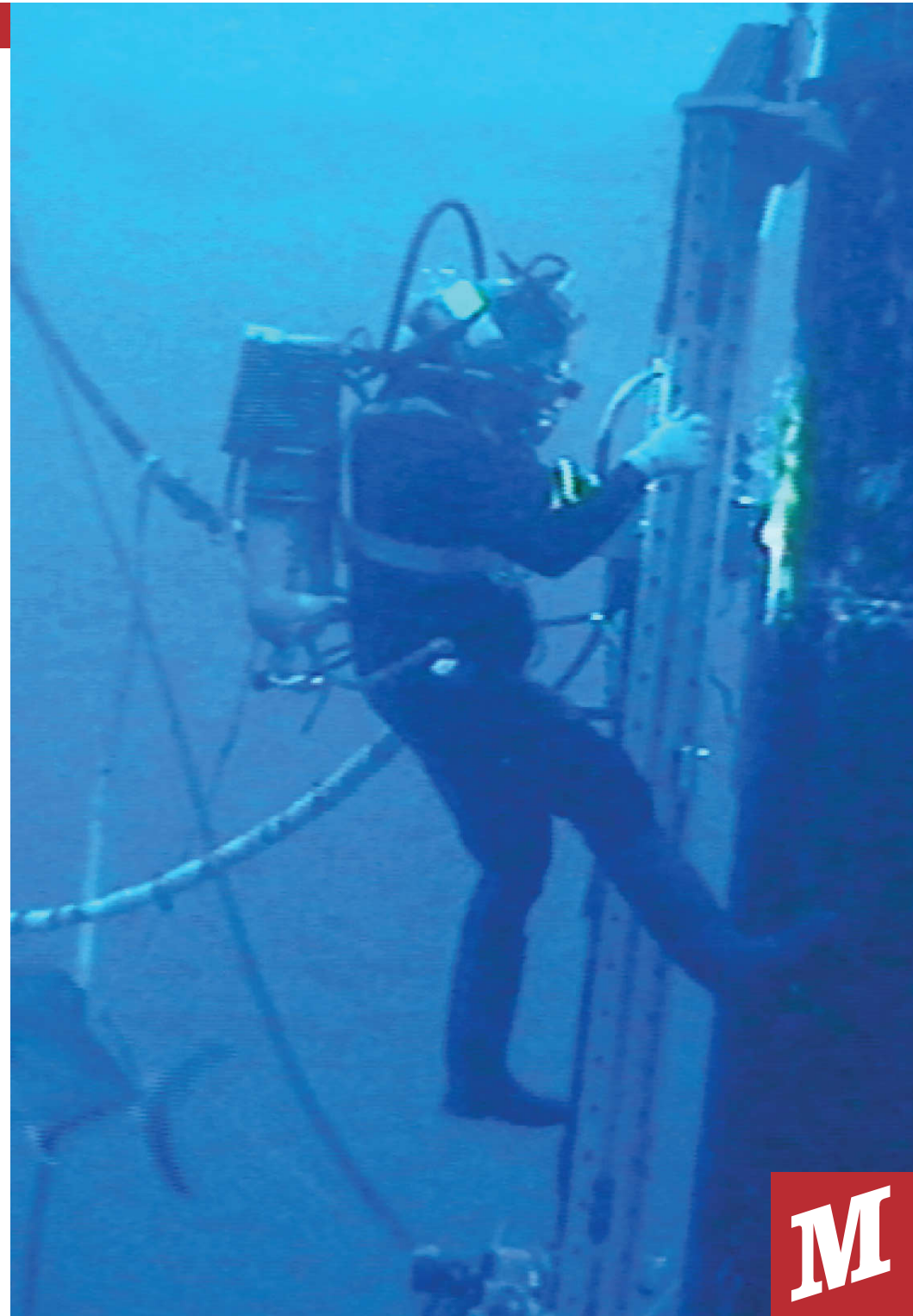
- ▶ Cutting range of 20" to 60"
- ▶ 2 models available
- ▶ Purpose built for cutting below the mudline
- ▶ Compact footprint minimizes excavation time and dredging requirements



PORTABLE MILLING EQUIPMENT

The precision mill-work of a machine shop brought to your job site.

- ▶ Rail, Boring, and Gantry mills
- ▶ Curved or flat surfaces
- ▶ Hydraulic, pneumatic, and electric drive options
- ▶ Travel lengths available up to 120"



PORTABLE INDUSTRIAL DRILLING

- ▶ Electric and earth magnetic mounting options
- ▶ Broad range of sizes and capabilities
- ▶ Extensive fixtures and tooling
- ▶ Drilling and boring
- ▶ Power feed
- ▶ Stud removal



DUAL PIN DRILLS

- ▶ 6" - 36" pipe diameter
- ▶ Up to 6" hole diameter
- ▶ Rolling design for fast setup
- ▶ Ideal for topside slot recovery & conductor removal operations
- ▶ Conductor drilling core bits and lifting pin accessories also available



RENT FROM MACTECH



COST EFFECTIVE

Renting is less capital intensive than a full product purchase



HANDS-ON EXPERIENCE

Your team gets a chance to handle the equipment before making a purchase decision



FLEET MAINTENANCE

You have access to a fleet of products that are maintained and ready to go

WE HAVE AN EXTENSIVE FLEET OF RENTAL MACHINES AVAILABLE:

- ▶ 200+ Clamshell pipe cutting machines 2"-110"
- ▶ 40+ Diamond Wire Saws
- ▶ 100+ Portable Drills - up to morse #5 taper
- ▶ 25+ Flange facing machines 1" - 240"
- ▶ 10 Shaft lathes 1"-24"
- ▶ 30+ Line boring machines 3/4" - 10" diameter
- ▶ 50+ Portable milling machines - XYZ, gantry, boring

For more information on rentals, contact us at:

info@mactechoffshore.com

1 (337) 839-2793

INDUSTRIES WE KNOW

OFFSHORE OIL & GAS

Offshore decommissioning

Jacket & pipeline cutting

Pipeline removal

Slot recovery & conductor removal

Stud & lockpin removal

Flange refacing



CIVIL & HEAVY CONSTRUCTION

Foundation pile cutting

Core drilling

Steel & concrete cutting

Onsite machining



MARINE CONSTRUCTION

Cut piles to grade

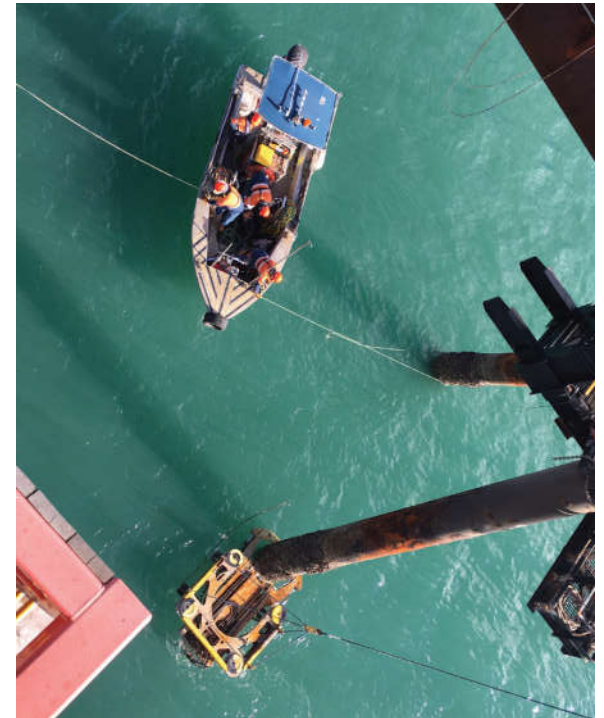
Caisson cutting

Bridge removal

Internal pile cutting

Core drilling

Steel & concrete cutting



AT MACTECH:

Our equipment is maintained by...

Our machines are packed and tooled by...

Our project recommendations are supported by...

Our new product design input is collected by...

Our gear is tested and proven by...

EXPERIENCED FIELD MACHINING TECHNICIANS

Let's work together

We are your strategic field machining partner





MACTECHOFFSHORE.COM

☎ 1 (337) 839-2793

✉ info@mactechoffshore.com