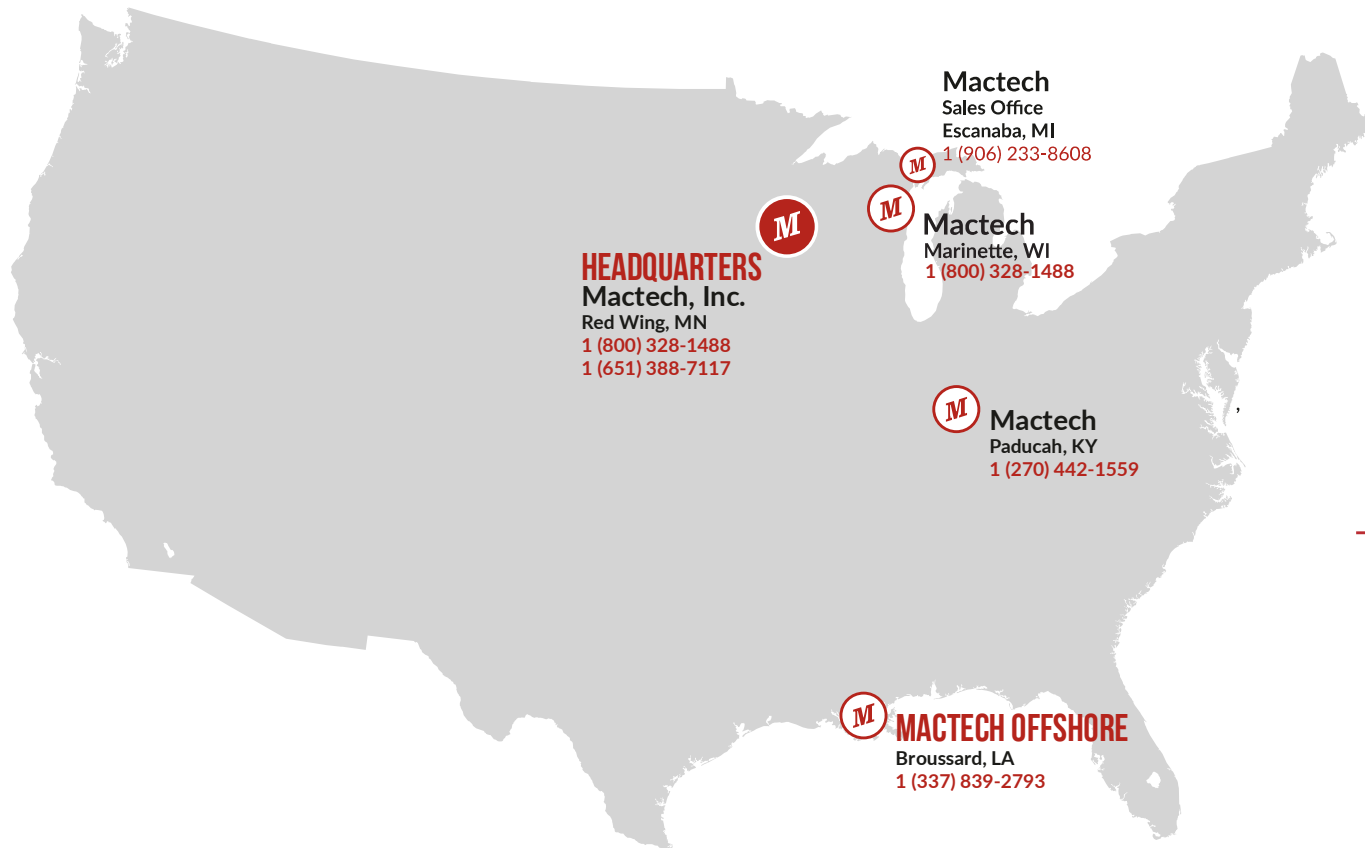


MACTECH

**DIAMOND WIRE SAW
OVERVIEW**

MACTECHOFFSHORE.COM



HEADQUARTERS
Mactech, Inc.
Red Wing, MN
1 (800) 328-1488
1 (651) 388-7117

Mactech
Sales Office
Escanaba, MI
1 (906) 233-8608

Mactech
Marinette, WI
1 (800) 328-1488

Mactech
Paducah, KY
1 (270) 442-1559

MACTECH OFFSHORE
Broussard, LA
1 (337) 839-2793



WORLDWIDE SUPPLIERS AND SERVICE

*Mactech proudly has representation
across the globe.*

*For more information on connecting with
your nearest sales agent, contact us at:*

info@mactechoffshore.com

1 (337) 839-2793



Unique Group

Jerrell

MACTECH

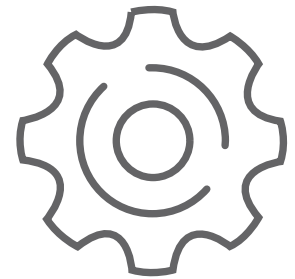
FOUNDED IN 1974

**STRATEGICALLY LOCATED THROUGHOUT THE U.S.
WITH FIVE INTERNATIONAL DISTRIBUTION PARTNERS**

- ▶ 40 Full-time technicians
- ▶ 6 Full-time engineering staff
- ▶ 500+ On-site machine tools
- ▶ 50+ Rental Diamond Wire Saws
- ▶ In-house production of equipment and tooling
- ▶ Around the clock manufacturing capability
- ▶ Sales, Rental, and Service



40+ TECHNICIANS



500+ MACHINE TOOLS

MACTECH OFFSHORE PROVEN PROCESS

WITH OVER 45 YEARS OF EXPERIENCE IN THE FIELD MACHINING SERVICE INDUSTRY, WE CREATED THESE SIX STEPS TO ENSURE A SUCCESSFUL EXECUTION FROM START TO FINISH

1. Define the scope of the project clearly
2. Create a best-value plan for the projects completion
3. Communicate and confirm the recommendation
4. Schedule and coordinate all required resources
5. Execute the plan and be ready to adapt with open communication through completion
6. Continuous improvement review

WHAT MAKES MACTECH OFFSHORE UNIQUE?



EXCEPTIONAL PEOPLE AND EQUIPMENT



PASSIONATE CUSTOMER COMMITMENT



EXPERTISE FROM EXPERIENCE

OFFSHORE CUTTING SOLUTIONS

PROVIDING VALUE BY SOLVING PROBLEMS THROUGH EXPERIENCE

- ▶ Offshore and Onshore Oil & Gas
- ▶ Marine Construction
- ▶ Civil & Heavy Construction
- ▶ Cutting, drilling, and machining solutions



DIAMOND WIRE SAW OVERVIEW

For surface and underwater cutting of almost any material

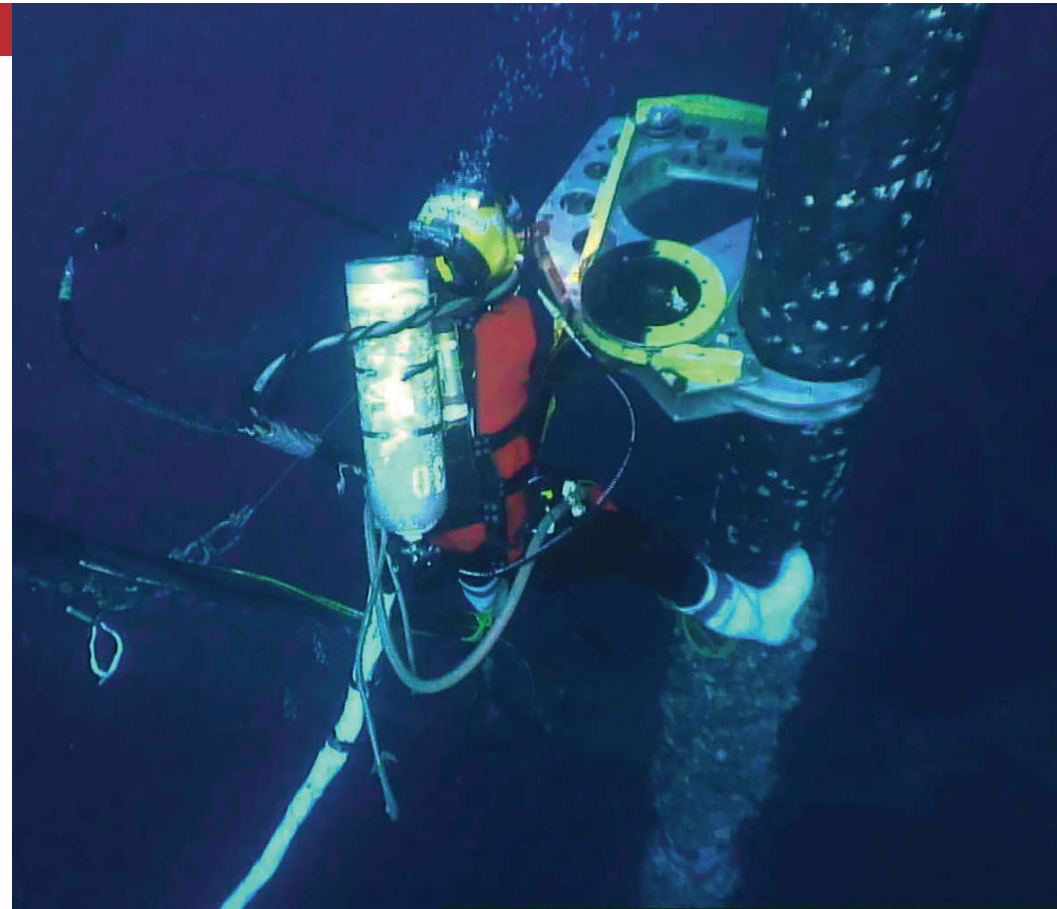
- ▶ Cutoff / Inline / Articulating
- ▶ Cutting range of 4.5" to 120"
- ▶ ROV compatible configurations on some models
- ▶ Standard automatic feed on many models



CUTOFF DIAMOND WIRE SAWS

Compact, lightweight design for tight spaces

- ▶ 3 Models available
- ▶ Cutting range 4.5" to 24"
- ▶ Automatic feed available
- ▶ ROV Package on some models



DWS-16co-SS

PART# 607-0019-SS

SPECIFICATIONS

Cutting Capacity	Ø 4.5" - Ø 16"
	Ø 114 - Ø 406mm
Operating Dimensions	44" x 41" x 11"
	1117 x 1041 x 279mm
Operating Weight	(Dry) 210 lbs / (Wet) 150lbs
	(Dry) 95kg / (Wet) 68kg

HYDRAULIC REQUIREMENTS

Drive	15 gpm @ 3000 psi
	57 lpm @ 207 bar
Feed	.5 gpm @ 500 psi
	2 lpm @ 30 bar
Clamp	.5 gpm @ 1500 psi
	2 lpm @ 103 bar

- ▶ Cutoff Saw
- ▶ Stainless Steel Fasteners & Fittings

CUTOFF



All dimensions and hydraulic requirements are for reference and may be subject to change without notice. Machine performance is subject to application and operator capability; please discuss your requirements directly with a Mactech sales representative. All information given and all sales made by Mactech Inc. are subject to their terms and conditions.



DWS-24co-SS

PART# 607-0095-SS

CUTOFF

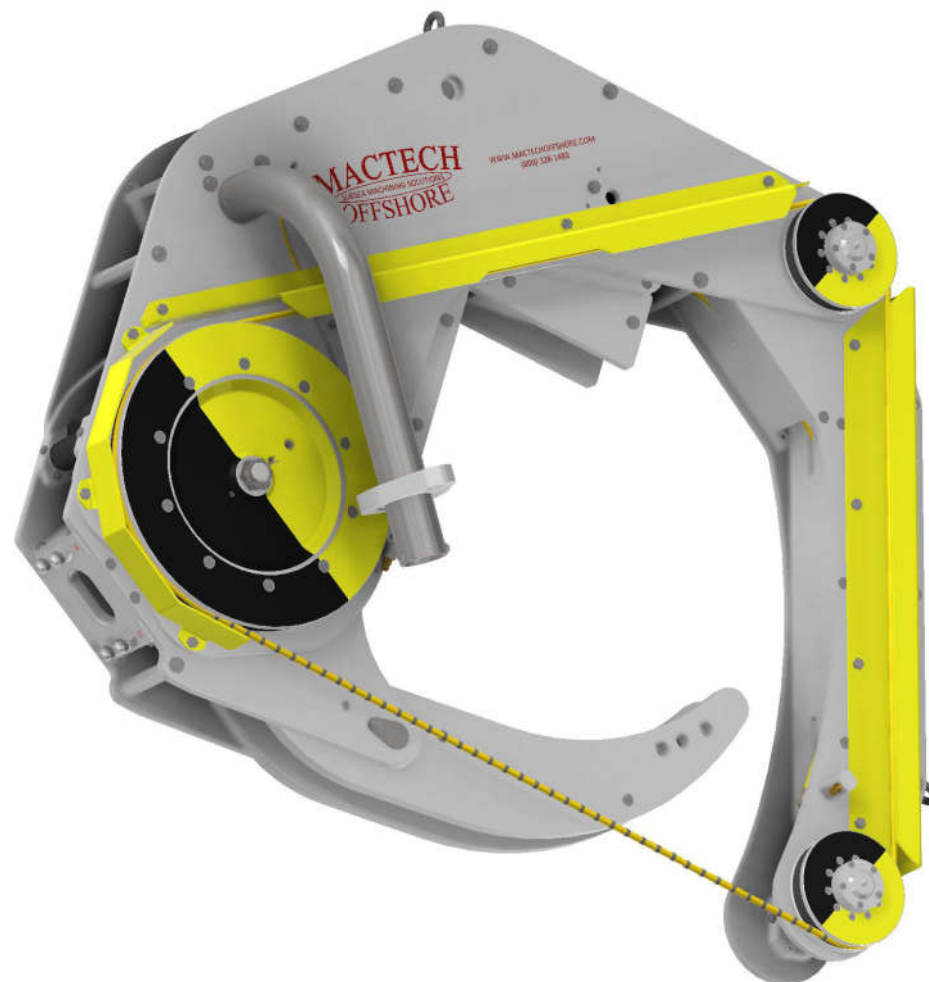
SPECIFICATIONS

Cutting Capacity	Ø 10" - Ø 24"
	Ø 254 - Ø 610mm
Operating Dimensions	61" x 53" x 18"
	1526 x 1445 x 408mm
Operating Weight	(Dry) 345 lbs / (Wet) 220lbs
	(Dry) 156kg / (Wet) 100kg

HYDRAULIC REQUIREMENTS

Drive	15 gpm @ 3000 psi
	57 lpm @ 207 bar
Feed	.5 gpm @ 500 psi
	2 lpm @ 34 bar
Clamp	.5 gpm @ 1500 psi
	2 lpm @ 103 bar

- ▶ Cutoff Saw
- ▶ Stainless Steel Fasteners & Fittings



All dimensions and hydraulic requirements are for reference and may be subject to change without notice. Machine performance is subject to application and operator capability; please discuss your requirements directly with a Mactech sales representative. All information given and all sales made by Mactech Inc. are subject to their terms and conditions.



DWS-24co ROV

PART# 607-0328

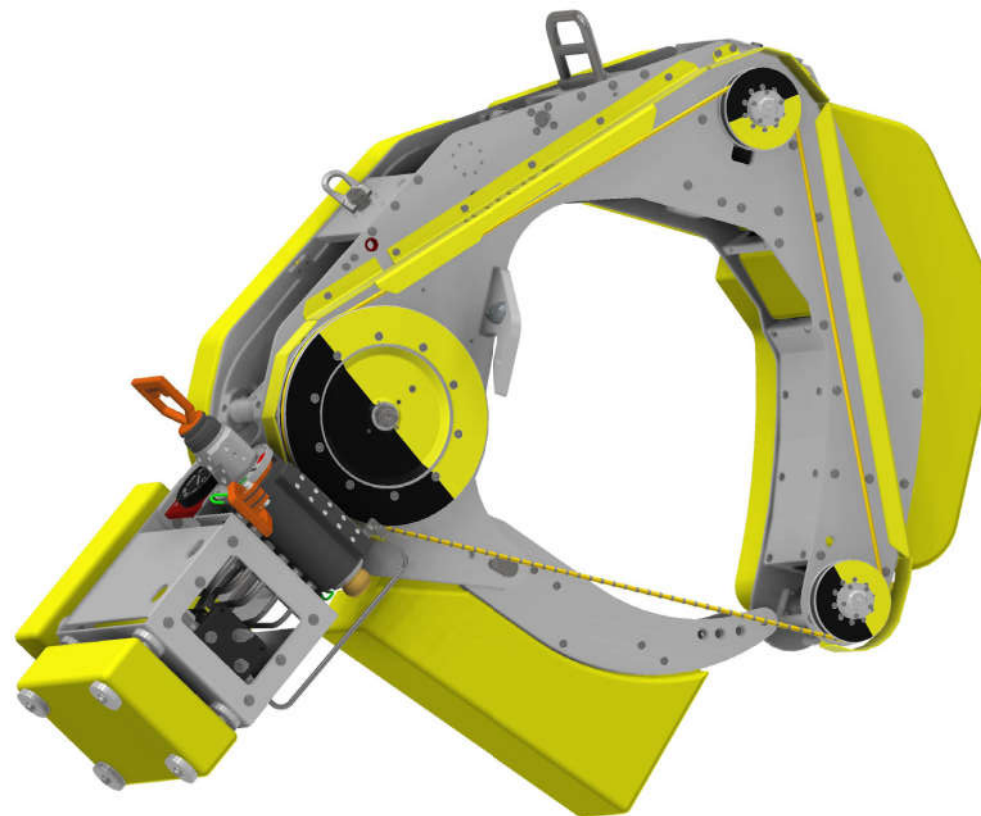
SPECIFICATIONS

Cutting Capacity	Ø 10" - Ø 24"
	Ø 254 - Ø 610mm
Operating Dimensions	76" x 68" x 25"
	1923 x 1715 x 630mm
Operating Weight	(Dry) 550 lbs / (Wet) 93 lbs
	(Dry) 250 kg / (Wet) 42kg

HYDRAULIC REQUIREMENTS

Drive	15 gpm @ 3000 psi
	57 lpm @ 207 bar
Feed	.5 gpm @ 500 psi
	2 lpm @ 34 bar
Clamp	.5 gpm @ 1500 psi
	2 lpm @ 103 bar

- ▶ Cutoff Saw
- ▶ Stainless Steel Fasteners & Fittings
- ▶ ROV Handles, Hot Stabs, Compensator, and Buoyancy Package



CUTOFF

All dimensions and hydraulic requirements are for reference and may be subject to change without notice. Machine performance is subject to application and operator capability; please discuss your requirements directly with a Mactech sales representative. All information given and all sales made by Mactech Inc. are subject to their terms and conditions.



INLINE DIAMOND WIRE SAWS

Our largest cutting range and most versatile design to suit most applications

- ▶ 9 models available
- ▶ Cutting range of 14" to 120"
- ▶ ROV compatible options
- ▶ Standard automatic feed



DWS-30i-AF-SS

PART# 607-0132-SS

INLINE

SPECIFICATIONS

Cutting Capacity	Ø 14" - Ø 30"
	Ø 356 - Ø 762mm
Operating Dimensions	94" x 64" x 40"
	2388 x 1626 x 1016mm
Operating Weight	(Dry) 950 lbs / (Wet) 696lbs
	(Dry) 431kg / (Wet) 315kg

HYDRAULIC REQUIREMENTS

Drive	15 gpm @ 3000 psi
	57 lpm @ 207 bar
Feed	.5 gpm @ 650 psi
	2 lpm @ 49 bar
Clamp	.5 gpm @ 1500 psi
	2 lpm @ 103 bar



- ▶ Inline Saw
- ▶ Stainless Steel Fasteners & Fittings
- ▶ Automatic Feed Operation

All dimensions and hydraulic requirements are for reference and may be subject to change without notice. Machine performance is subject to application and operator capability; please discuss your requirements directly with a Mactech sales representative. All information given and all sales made by Mactech Inc. are subject to their terms and conditions.



DWS-30i ROV

PART# 607-0443

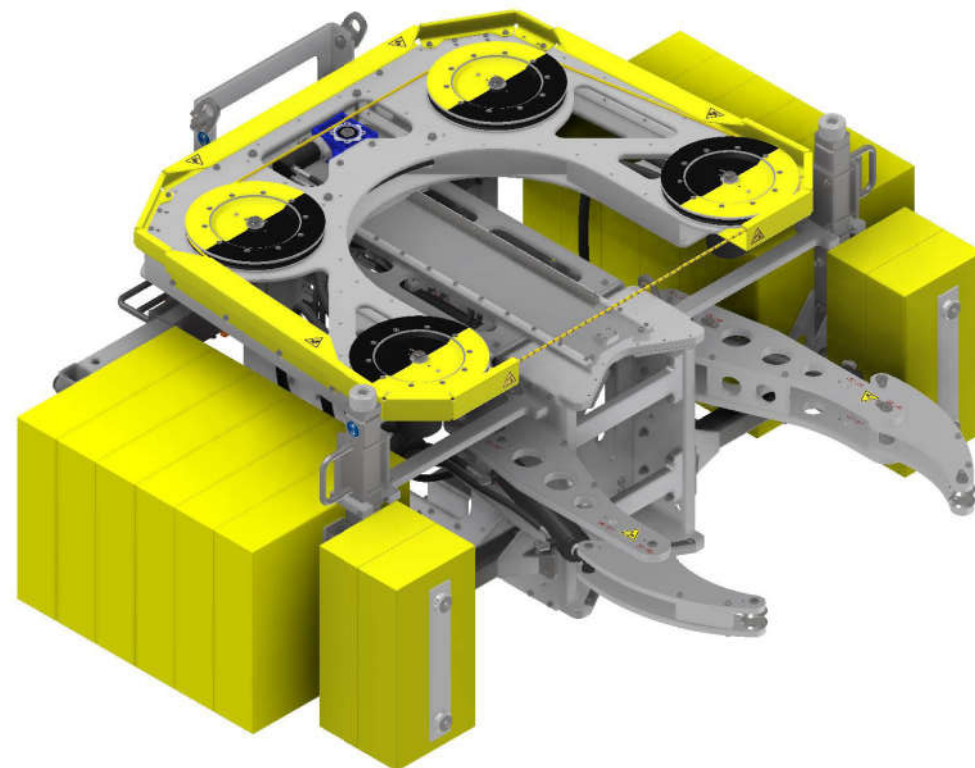
INLINE

SPECIFICATIONS

Cutting Capacity	Ø 14" - Ø 30"
	Ø 356 - Ø 762mm
Operating Dimensions	107" x 102" x 40"
	2208 x 2588 x 1013mm
Operating Weight	(Dry) 2405 lbs / (Wet) 223 lbs
	(Dry) 1088 kg / (Wet) 101kg

HYDRAULIC REQUIREMENTS

Drive	15 gpm @ 3000 psi
	57 lpm @ 207 bar
Feed	.5 gpm @ 650 psi
	2 lpm @ 49 bar
Clamp	.5 gpm @ 1500 psi
	2 lpm @ 103 bar



- ▶ Inline Saw
- ▶ Stainless Steel Fasteners & Fittings
- ▶ ROV Handles, Hot Stabs, Compensator, and Buoyancy Package

All dimensions and hydraulic requirements are for reference and may be subject to change without notice. Machine performance is subject to application and operator capability; please discuss your requirements directly with a Mactech sales representative. All information given and all sales made by Mactech Inc. are subject to their terms and conditions.



DWS-48i-AF-SS

PART# 607-0209

INLINE

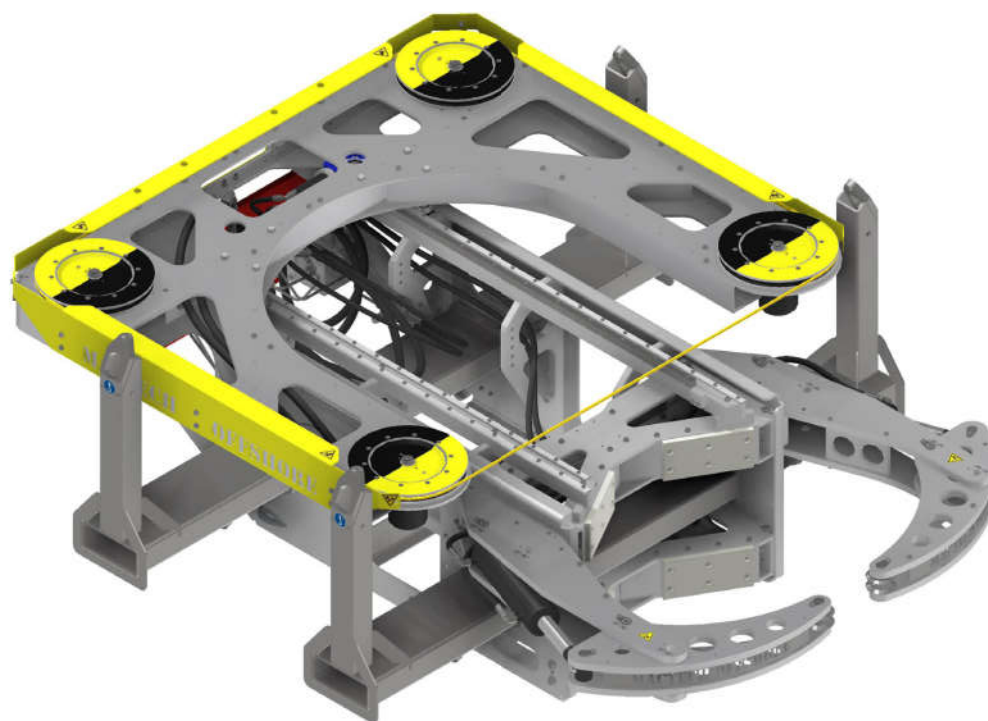
SPECIFICATIONS

Cutting Capacity	Ø 20" - Ø 48"
	Ø 508 - Ø 1219mm
Operating Dimensions	134" x 94" x 43"
	3403 x 2387 x 1092mm
Operating Weight	(Dry) 2150 lbs / (Wet) 1600lbs
	(Dry) 975kg / (Wet) 726kg

HYDRAULIC REQUIREMENTS

Drive	15 gpm @ 3000 psi
	57 lpm @ 207 bar
Feed	.5 gpm @ 650 psi
	2 lpm @ 49 bar
Clamp	.5 gpm @ 1500 psi
	2 lpm @ 103 bar

- ▶ Inline Saw
- ▶ Stainless Steel Fasteners & Fittings
- ▶ Automatic Feed Operation



All dimensions and hydraulic requirements are for reference and may be subject to change without notice. Machine performance is subject to application and operator capability; please discuss your requirements directly with a Mactech sales representative. All information given and all sales made by Mactech Inc. are subject to their terms and conditions.



DWS-48i-ROV-SS

PART# 607-0323

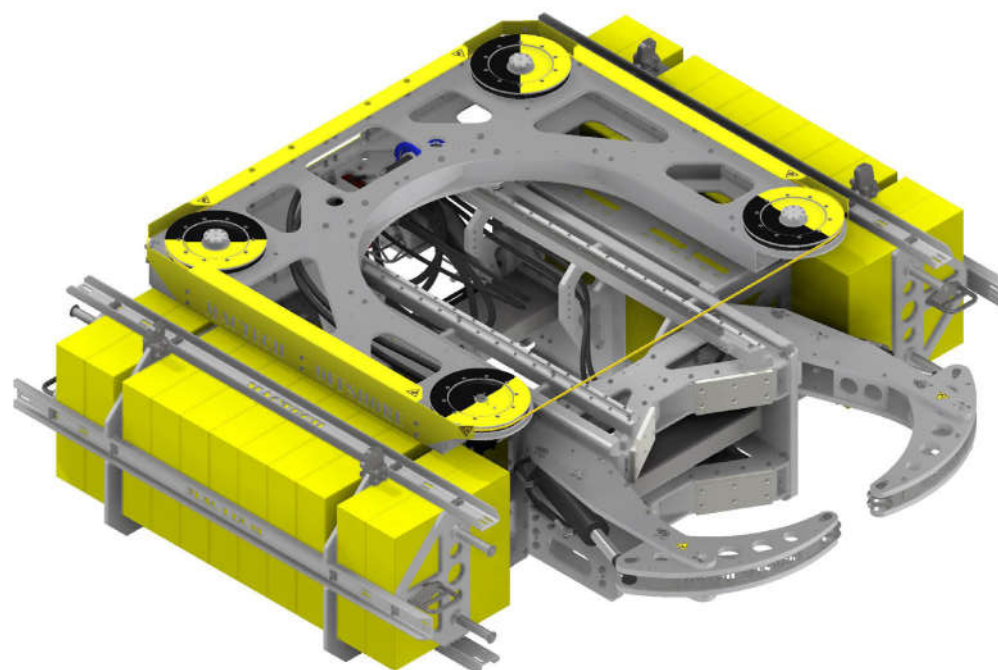
INLINE

SPECIFICATIONS

Cutting Capacity	Ø 20" - Ø 48"
	Ø 508 - Ø 1219mm
Operating Dimensions	139" x 124" x 38"
	3525 x 3150 x 968mm
Operating Weight	(Dry) 4500 lbs / (Wet) 20lbs
	(Dry) 2041kg / (Wet) 9kg

HYDRAULIC REQUIREMENTS

Drive	15 gpm @ 3000 psi
	57 lpm @ 207 bar
Feed	.5 gpm @ 650 psi
	2 lpm @ 49 bar
Clamp	.5 gpm @ 1500 psi
	2 lpm @ 103 bar



- ▶ Inline Saw
- ▶ Stainless Steel Fasteners & Fittings
- ▶ Automatic Feed Operation
- ▶ ROV Handles, Hot Stabs, Compensator, and Buoyancy Package

All dimensions and hydraulic requirements are for reference and may be subject to change without notice. Machine performance is subject to application and operator capability; please discuss your requirements directly with a Mactech sales representative. All information given and all sales made by Mactech Inc. are subject to their terms and conditions.



DWS-60i-AF-SS

PART# 607-0004

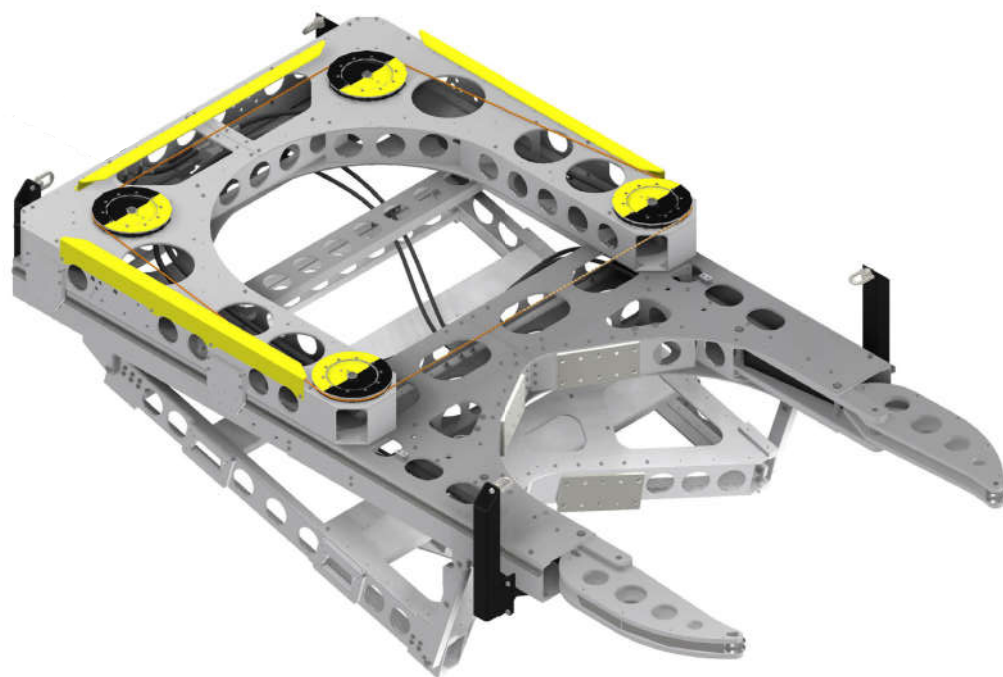
INLINE

SPECIFICATIONS

Cutting Capacity	Ø 26" - Ø 60"
	Ø 660 - Ø 1524mm
Operating Dimensions	182" x 98" x 55"
	4622 x 2489 x 1397mm
Operating Weight	(Dry) 2600 lbs / (Wet) 1785lbs
	(Dry) 1180kg / (Wet) 810kg

HYDRAULIC REQUIREMENTS

Drive	15 gpm @ 3000 psi
	57 lpm @ 207 bar
Feed	.5 gpm @ 1000 psi
	2 lpm @ 69 bar
Clamp	.5 gpm @ 1500 psi
	2 lpm @ 103 bar



- ▶ Inline Saw
- ▶ Stainless Steel Fasteners & Fittings
- ▶ Automatic Feed Operation

All dimensions and hydraulic requirements are for reference and may be subject to change without notice. Machine performance is subject to application and operator capability; please discuss your requirements directly with a Mactech sales representative. All information given and all sales made by Mactech Inc. are subject to their terms and conditions.



DWS-84i-AF-SS

PART# 607-0161

SPECIFICATIONS

Cutting Capacity	Ø 36" - Ø 84"
	Ø 914 - Ø 2134mm
Operating Dimensions	237" x 144" x 79"
	6031 x 3661 x 1998mm
Operating Weight	(Dry) 4300 lbs / (Wet) 3000lbs
	(Dry) 1950kg / (Wet) 1360kg

HYDRAULIC REQUIREMENTS

Drive	40 gpm @ 3000 psi
	151 lpm @ 207 bar
Feed	.5 gpm @ 1000 psi
	2 lpm @ 69 bar
Clamp	.5 gpm @ 1500 psi
	2 lpm @ 103 bar



- ▶ Inline Saw
- ▶ Stainless Steel Fasteners & Fittings
- ▶ Automatic Feed Operation
- ▶ ROV Package Available Soon

All dimensions and hydraulic requirements are for reference and may be subject to change without notice. Machine performance is subject to application and operator capability; please discuss your requirements directly with a Mactech sales representative. All information given and all sales made by Mactech Inc. are subject to their terms and conditions.



INLINE

DWS-102i-AF-SS

PART# 607-0301

INLINE

SPECIFICATIONS

Cutting Capacity	Ø 48" - Ø 102"
	Ø 1016 - Ø 2591mm
Operating Dimensions	175" x 140" x 78"
	4445 x 3556 x 1981mm
Operating Weight	(Dry) 3100 lbs / (Wet) 2100lbs
	(Dry) 1406kg / (Wet) 953kg

HYDRAULIC REQUIREMENTS

Drive	40 gpm @ 3000 psi
	151 lpm @ 207 bar
Feed	.5 gpm @ 1000 psi
	2 lpm @ 69 bar
Clamp	N / A
	N / A



- ▶ Inline Saw
- ▶ Stainless Steel Fasteners & Fittings
- ▶ Automatic Feed Operation

All dimensions and hydraulic requirements are for reference and may be subject to change without notice. Machine performance is subject to application and operator capability; please discuss your requirements directly with a Mactech sales representative. All information given and all sales made by Mactech Inc. are subject to their terms and conditions.



DWS-120i-AF-SS

PART# 607-0329

SPECIFICATIONS

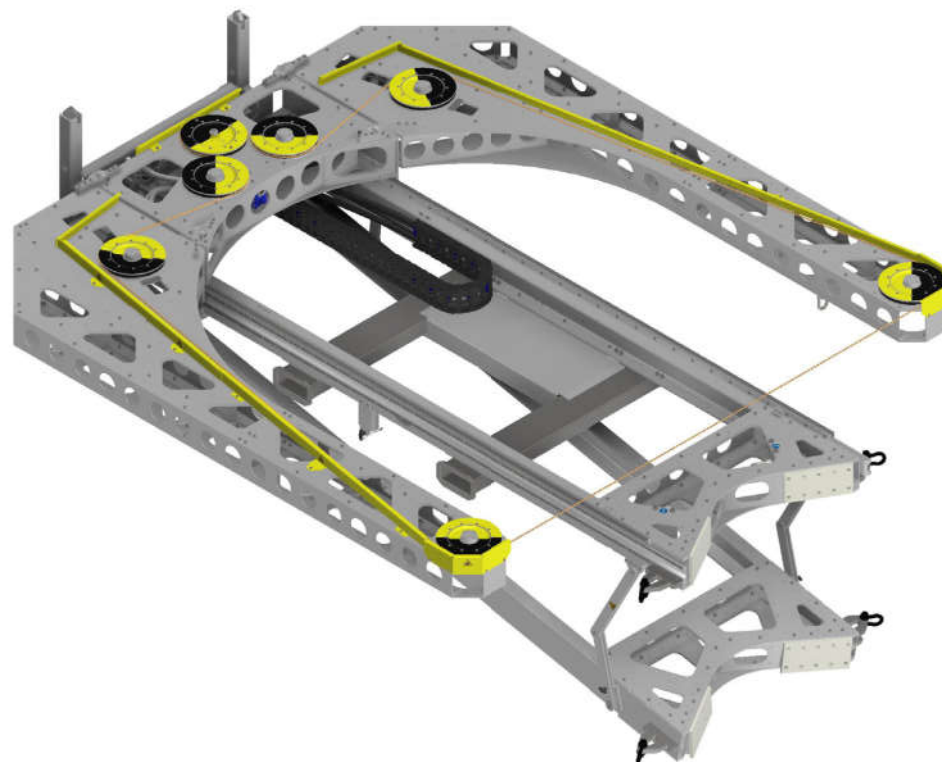
Cutting Capacity	Ø 48" - Ø 120"
	Ø 1219 - Ø 3048mm
Operating Dimensions	203" x 158" x 83"
	5156 x 4013 x 2108mm
Operating Weight	(Dry) 3500 lbs / (Wet) 2400lbs
	(Dry) 1587kg / (Wet) 1088kg

HYDRAULIC REQUIREMENTS

Drive	40 gpm @ 3000 psi
	151 lpm @ 207 bar
Feed	.5 gpm @ 1000 psi
	2 lpm @ 69 bar
Clamp	N / A
	N / A

- ▶ Inline Saw
- ▶ Automatic Feed Operation
- ▶ Stainless Steel Fasteners & Fittings

INLINE



All dimensions and hydraulic requirements are for reference and may be subject to change without notice. Machine performance is subject to application and operator capability; please discuss your requirements directly with a Mactech sales representative. All information given and all sales made by Mactech Inc. are subject to their terms and conditions.



DWS-120i-AF-SS

PART# 607-0331

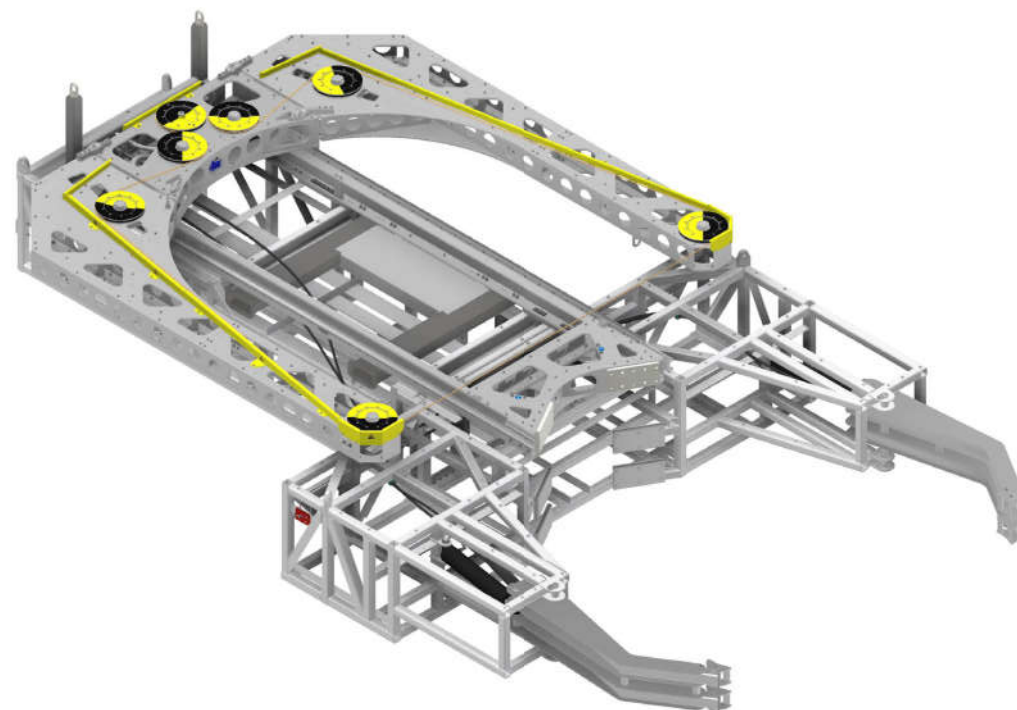
INLINE

SPECIFICATIONS

Cutting Capacity	Ø 84" - Ø 102"
	Ø 2134 - Ø 2591mm
Operating Dimensions	322" x 181" x 61"
	8422 x 4598 x 1538mm
Operating Weight	(Dry) 6850 lbs / (Wet) 4850lbs
	(Dry) 3108kg / (Wet) 2200kg

HYDRAULIC REQUIREMENTS

Drive	40 gpm @ 3000 psi
	151 lpm @ 207 bar
Feed	.5 gpm @ 1000 psi
	2 lpm @ 69 bar
Clamp	.5 gpm @ 1500 psi
	2 lpm @ 103 bar



- ▶ Inline Saw
- ▶ Stainless Steel Fasteners & Fittings
- ▶ Automatic Feed Operation
- ▶ Clamp Assembly

All dimensions and hydraulic requirements are for reference and may be subject to change without notice. Machine performance is subject to application and operator capability; please discuss your requirements directly with a Mactech sales representative. All information given and all sales made by Mactech Inc. are subject to their terms and conditions.



ARTICULATING DIAMOND WIRE SAWS

Specialty saws for cutting in excavations and space with low axial clearance

- ▶ 2 models available
- ▶ Cutting range of 22" to 60"
- ▶ Purpose built for cutting below the mudline
- ▶ Compact footprint minimizes excavation time and dredging requirements



DWS-40a-AF-SS

PART# 620-7900

ARTICULATING

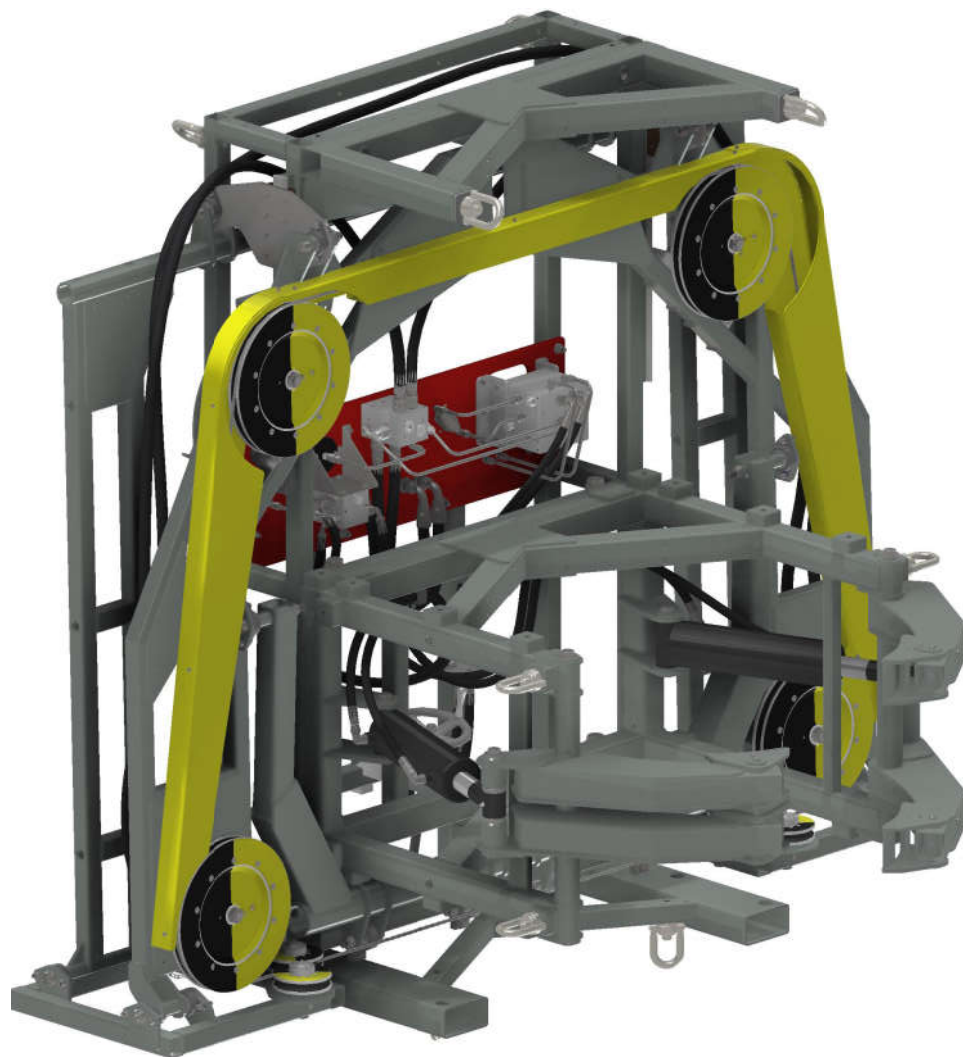
SPECIFICATIONS

Cutting Capacity	Ø 22" - Ø 40"
	Ø 508 - Ø 1016mm
Operating Dimensions	67" x 105" x 86"
	1702 x 2667 x 2184mm
Operating Weight	(Dry) 2140 lbs / (Wet) 1790lbs
	(Dry) 1161kg / (Wet) 812kg

HYDRAULIC REQUIREMENTS

Drive	15 gpm @ 3000 psi
	57 lpm @ 207 bar
Feed	.5 gpm @ 1000 psi
	2 lpm @ 69 bar
Clamp	.5 gpm @ 1500 psi
	2 lpm @ 103 bar

- ▶ Articulating Saw
- ▶ Stainless Steel Fasteners & Fittings
- ▶ Automatic Feed Operation



All dimensions and hydraulic requirements are for reference and may be subject to change without notice. Machine performance is subject to application and operator capability; please discuss your requirements directly with a Mactech sales representative. All information given and all sales made by Mactech Inc. are subject to their terms and conditions.



DWS-60a-SS

PART# 607-0084

SPECIFICATIONS

Cutting Capacity	Ø 26" - Ø 60"
	Ø 660 - Ø 1524mm
Operating Dimensions	113" x 109" x 128"
	2870 x 2769 x 3251mm
Operating Weight	(Dry) 3275 lbs / (Wet) 2158lbs
	(Dry) 1485kg / (Wet) 980kg

HYDRAULIC REQUIREMENTS

Drive	40 gpm @ 3000 psi
	151 lpm @ 207 bar
Feed	.5 gpm @ 1500 psi
	2 lpm @ 103 bar
Clamp	.5 gpm @ 1500 psi
	2 lpm @ 103 bar

- ▶ Articulating Saw
- ▶ Stainless Steel Fasteners & Fittings

All dimensions and hydraulic requirements are for reference and may be subject to change without notice. Machine performance is subject to application and operator capability; please discuss your requirements directly with a Mactech sales representative. All information given and all sales made by Mactech Inc. are subject to their terms and conditions.

ARTICULATING



RENT FROM MACTECH



COST EFFECTIVE

Renting is less capital intensive than a full product purchase



HANDS-ON EXPERIENCE

Your team gets a chance to handle the equipment before making a purchase decision



FLEET MAINTENANCE

You have access to a fleet of products that are maintained and ready to go

WE HAVE AN EXTENSIVE FLEET OF RENTAL MACHINES AVAILABLE:

- ▶ 200+ Clamshell pipe cutting machines 2"-110"
- ▶ 40+ Diamond Wire Saws
- ▶ 100+ Portable Drills - up to morse #5 taper
- ▶ 25+ Flange facing machines 1" - 240"
- ▶ 10 Shaft lathes 1"-24"
- ▶ 30+ Line boring machines 3/4" - 10" diameter
- ▶ 50+ Portable milling machines - XYZ, gantry, boring

For more information on rentals, contact us at:

info@mactechoffshore.com

1 (337) 839-2793

INDUSTRIES WE KNOW

OFFSHORE OIL & GAS

Offshore decommissioning

Jacket & pipeline cutting

Pipeline removal

Slot recovery & conductor removal

Stud & lockpin removal

Flange refacing



CIVIL & HEAVY CONSTRUCTION

Foundation pile cutting

Core drilling

Steel & concrete cutting

Onsite machining



MARINE CONSTRUCTION

Cut piles to grade

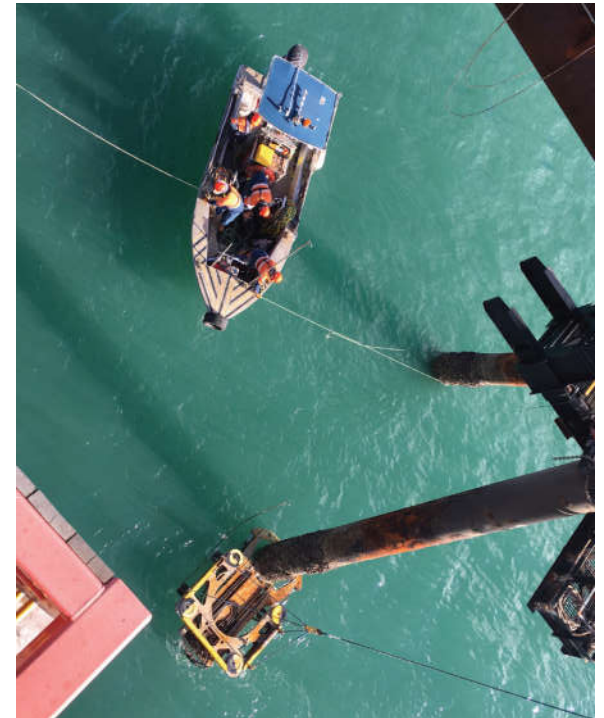
Caisson cutting

Bridge removal

Internal pile cutting

Core drilling

Steel & concrete cutting



AT MACTECH:

Our equipment is maintained by...

Our machines are packed and tooled by...

Our project recommendations are supported by...

Our new product design input is collected by...

Our gear is tested and proven by...

EXPERIENCED OFFSHORE TECHNICIANS

Let's work together

We are your strategic subsea cutting partner





MACTECHOFFSHORE.COM

☎ 1 (337) 839-2793

✉ info@mactechoffshore.com