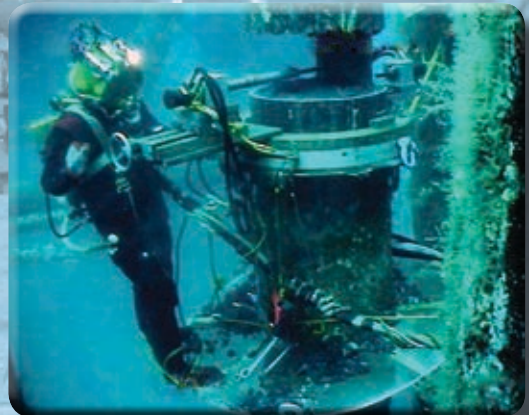


MACTECH OFFSHORE CAPABILITIES

MACTECH OFFSHORE PORTABLE MACHINING SOLUTIONS



MACTECH
SUBSEA MACHINING SOLUTIONS
OFFSHORE

MACTECH OFFSHORE CAPABILITIES

MACTECH OFFSHORE PORTABLE MACHINING SOLUTIONS

Mactech Has the Solution!

Your platform is damaged and on the sea floor. It must be removed. You know this will require coordination of the best personnel and equipment. Mactech has the solution for your platform removal. We supply the best equipment and the people who know how to build, operate and maintain it. Removing and maintaining subsea production equipment is a costly and difficult process. Mactech's experience will make it as easy as possible. From our versatile Clamshell Lathe to our powerful and dependable Rail Mill, we have the equipment and experience to solve your rig maintenance and removal operations. Mactech Offshore services are available worldwide at a moment's notice.



Clamshell Portable Lathes

Make your pipe cutting operations easier and faster with our Clamshell Portable Lathes. The low clearance design requires only 7 inches of axial clearance and as little as 6 inches radial clearance. The rigid design assures precise and high-quality cuts. Clamshells are available to cut pipe or casing from 2 to 60 inches diameter and are capable of cutting any wall thickness or material. Wellhead prep is made fast and easy with our sever/bevel feature. Versatile and adaptable, the clamshell portable lathe can carry out a variety of cutting operations.



Clamshell Portable Lathe Accessories

The adaptability of our popular Clamshell Portable Lathe allows many accessories to be used for cutting, drilling, facing and milling. Our Roto-Mill accessory mounts easily to the Clamshell and quickly severs casings, even when in compression. Our Hole Saw attachment is capable of running holes saws up to 8 inches and swivels to align with the inner casing.

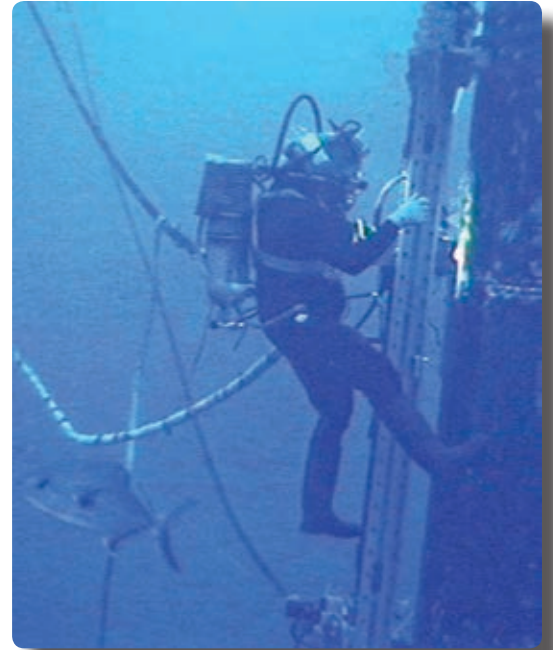


MACTECH OFFSHORE CAPABILITIES

MACTECH OFFSHORE PORTABLE MACHINING SOLUTIONS

Rail Mill

Milling, drilling or boring, subsea or topside, Mactech's Rail Mill is the machine to use for cutting casing or plate. Adaptable to almost any size job, the Rail Mill is one of the most versatile portable mills on the market. A powerful and adjustable magnetic mounting system allows the Rail Mill to be attached to nearly any steel surface, flat or round. Optional mounting systems allow the Rail Mill to be attached on anything, at any position.

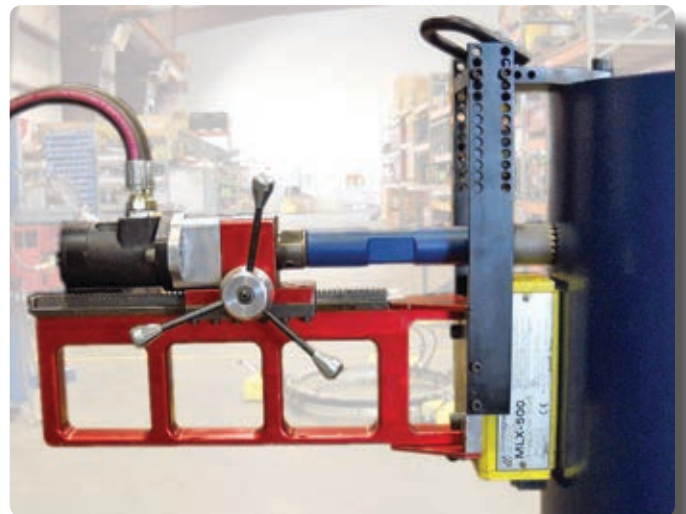


Gantry Mill

Mill large openings in submerged decks or crew quarters for rigging or access holes. True 3-axis movement can cut almost any shape or pattern desired. Our adaptable Gantry Mill can be custom designed and configured for your milling operations.

Portable Rack Drill

The powerful and versatile Portable Rack Drill is an easy-to-use drill for subsea and topside applications. Casing shackle holes for rigging are easily positioned and drilled when used with the Casing Hanger Bracket. Drilling vent holes in toppled platform decks is a simple operation of attaching the magnetic base to the surface and drilling the hole.

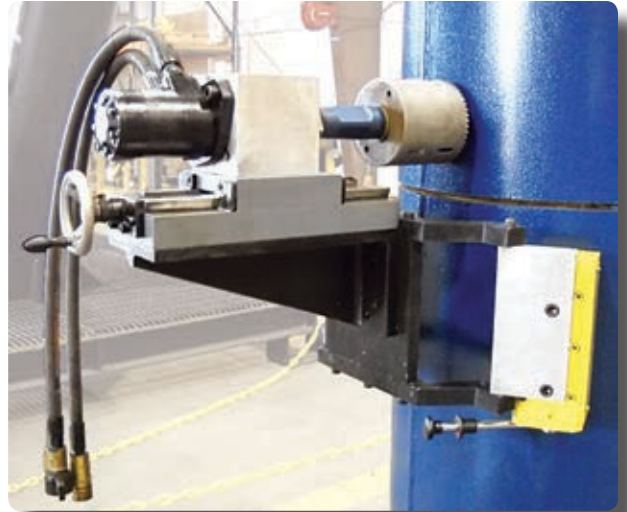


MACTECH OFFSHORE CAPABILITIES

MACTECH OFFSHORE PORTABLE MACHINING SOLUTIONS

Dual Magnet Drill

The Dual Magnet Drill is capable of drilling the largest holes in casing. The precision slide and bracket assembly provides an extremely rigid platform for the most demanding drilling jobs. The powerful hydraulic motor can easily cut through the toughest casing and aggregate. Super strong rare earth magnets provide a secure and stable base that can be mounted on any ferrous surface.



Dual Pin Drill

This easy-to-operate portable drill features opposing drills to cut down on drilling time. Hinged brackets for fast mounting, up to 30 inch capacity, and sturdy construction make this an ideal tool for offshore use.



Travel Cutter

This versatile machine is an ideal platform for carrying our popular Roto-Mill and other tools. Large diameters, out of round casing, hulls, deck and plate cutting, the Travel Cutter can do it quickly and reliably. It can be used on nearly any diameter or length, limited only by the length of the chain.



MACTECH OFFSHORE CAPABILITIES

MACTECH OFFSHORE PORTABLE MACHINING SOLUTIONS

ID Pipe Sever Machine

Reliably cuts casing, pilings and other round, hollow tube from the inside diameter. Cutting below the mudline (BML) is made safe and efficient with this unique tool. No external dredging or digging is required. Simply lower the ID Pipe Sever Machine into the cleaned pipe, activate the self-centering mechanism and begin your cut. Mactech's unique ID Pipe Sever Machine is your solution to limited access, round pipe severing applications.



Inline Diamond Wire Saw

Our series of inline saws has the broadest operating range, and are easily customized to adapt to your specific project needs. The unique design helps to reduce setup, installation, cutting and removal time, and the small footprint saves deck space.



Articulating Diamond Wire Saw

Ideal for cutting multi-string applications or heavy wall legs and cross members. The vertical stance means it can easily fit in coffer dams or excavations with minimal dredging, where other saws can't fit. The articulating design requires only 2 feet of clearance around the casing. This saw is ideal for conductor removal.



Conex Machine Shop

Mactech's self-contained machine shop is ready to be shipped to your site at a moment's notice. The Conex is equipped to support drilling, milling, window cutting, wedding cake, multi-string hot tapping and many other platform decommissioning operations. The variety of operations the Conex supports will minimize your downtime and maximize your productivity.

MACTECH OFFSHORE CAPABILITIES

MACTECH OFFSHORE PORTABLE MACHINING SOLUTIONS

On-Call Gulf Coast Coverage from Broussard, Louisiana

Mactech has hundreds of tools committed to the offshore subsea market. We take a personal interest in your job and will assist you with the most comprehensive support in the industry. Downtime is minimized with first-hand manufacturer's support and a fully stocked parts and spares department. Our professional on-site technicians are experts in the operation, repair and assembly of every tool. We don't use subcontractors, just seasoned experts. Mactech's experience and safety record are unsurpassed in the industry. We have performed thousands of subsea operations with 100% on-time performance and no incidents. We can send our tools and personnel anywhere in the world within hours. Our tools and Conex machine shops are ready to be delivered to your job site, wherever it may be. Mactech's 25 years of field service and custom tool design brings innovative and productive solutions to the offshore market.

We are committed to help you complete your job on time and on budget. Contact us today for a consultation with our expert staff. Mactech has the solution!

Mactech, Inc.

4079 Pepin Avenue, Unit 4
Red Wing, MN 55066
PH: 651-388-7117 • FAX: 337-839-2794
TOLL FREE: 800-328-1488

Mactech Offshore

3129 Highway 90 East
Broussard, LA 70518
PH: 337-839-2793 • FAX: 337-839-2794
TOLL FREE: 800-328-1488

Mactech Kentucky

42 Redbud Lane
Corbin, KY 40701
PH: 270-617-1877
TOLL FREE: 800-328-1488

Mactech Ohio

2131 Wadsworth Road, Suite 500
Norton, OH 44203
PH: 330-794-5971 • FAX: 330-794-7004
TOLL FREE: 800-328-1488

Mactech Australia

Unit 2, Vinnicombe Drive
Canning Vale, 6155
Western Australia
PH: 061 0488 014 560



www.mactechoffshore.com